



KEY:

	New trees - refer to arboriculturalist report
	Bin store
	Driveway - permeable paving



Aerial view of the site



Entrance from the end of Devereux Drive



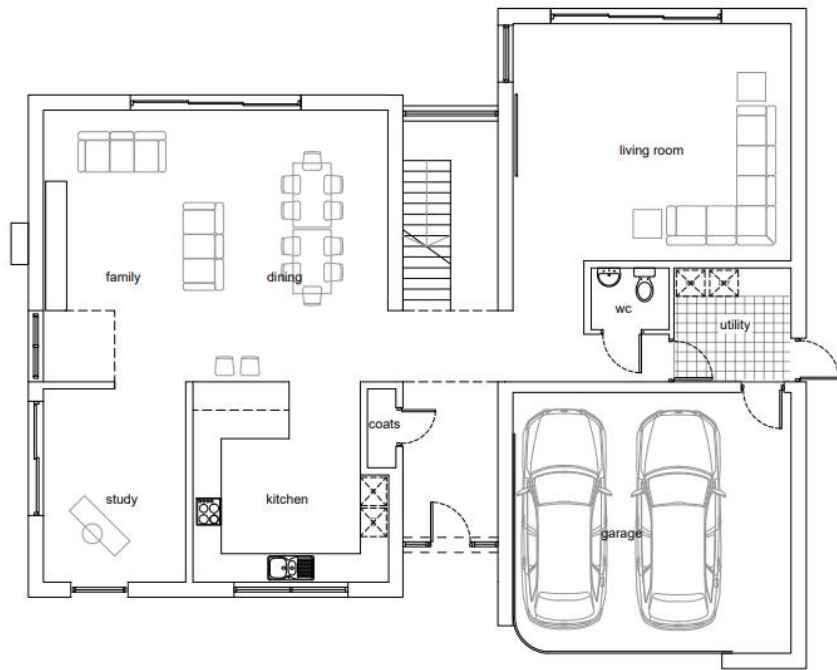
Entrance to the private drive in Farm Field. Sugden House visible. Public footpath immediately to the left.



Public footpath to the south of the site (looking west towards the access road into Farm Field)



View of the application site from the private drive looking towards the east

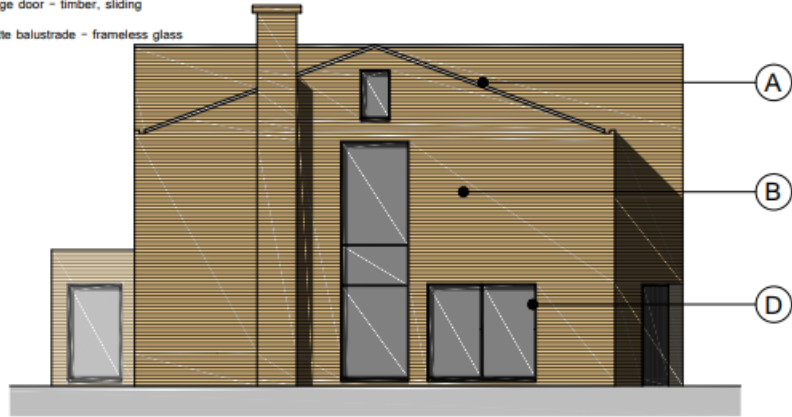


Proposed Ground Floor Plan 1:100



Proposed First Floor Plan 1:100

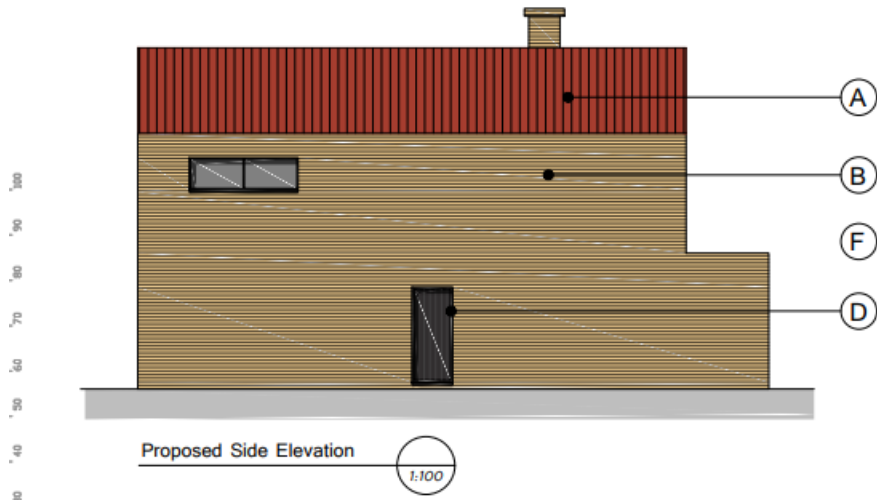
- (A) Roof tiles - Sandtoft Shire Interlocking Pantile, mottled red sand-faced
- (B) Facing Brickwork - Yellow London Stock
- (C) Metal Cladding - black: GreenCoat PLX or similar
- (D) Aluminium windows - slim-framed, black: Sieger Visiline or similar
- (E) Garage door - timber, sliding
- (F) Juliette balustrade - frameless glass



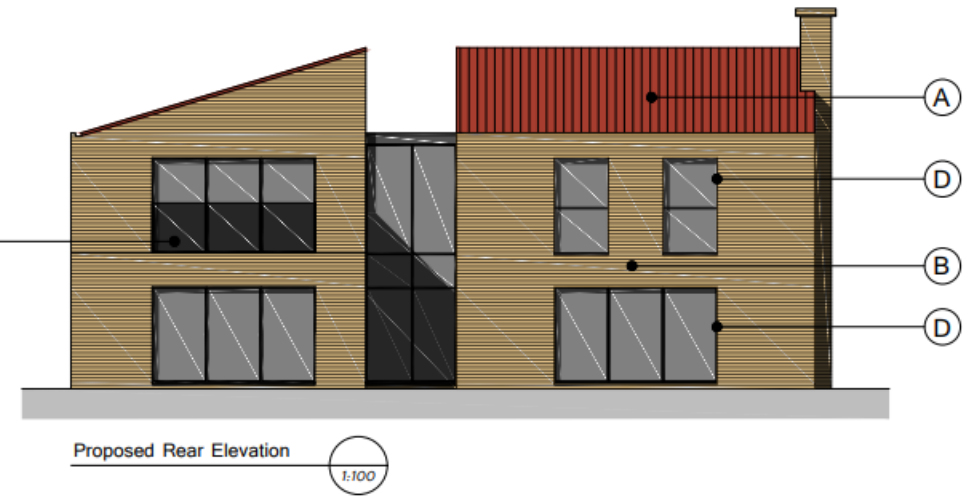
Proposed Side Elevation 1:100



Proposed Front Elevation 1:100



Proposed Side Elevation 1:100

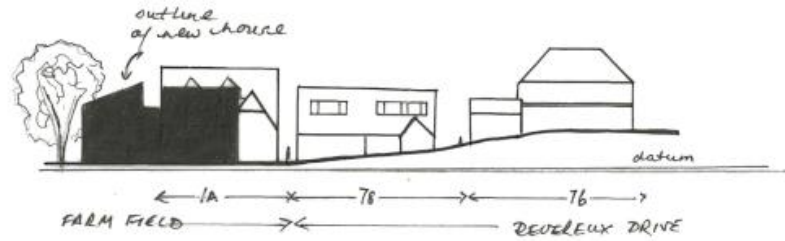


Proposed Rear Elevation 1:100



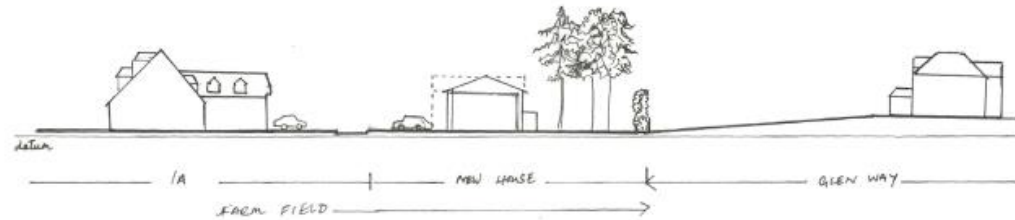
Key Plan

1:1250



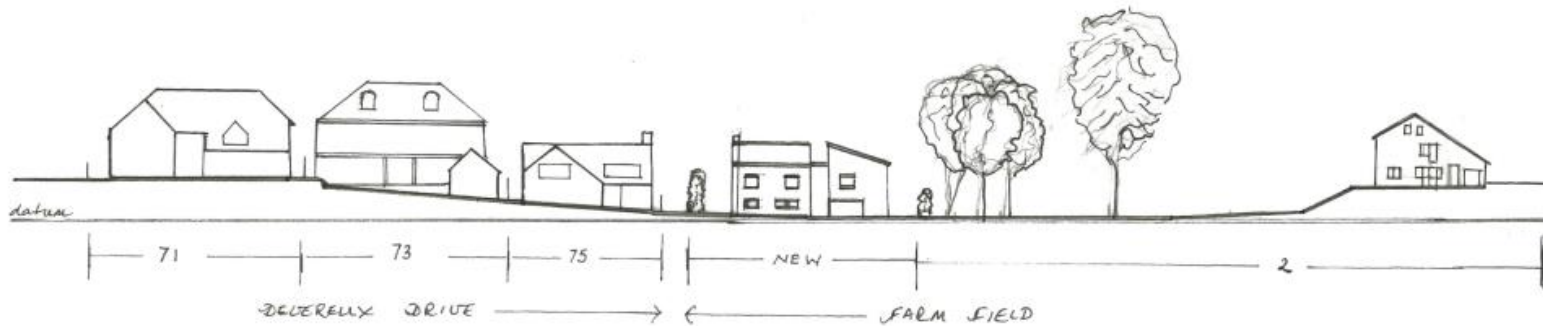
Streetscene A-A

1:500



Streetscene B-B

1:500



Streetscene C-C

1:500

EXTERNAL MATERIALS:

Doors & Windows - black slim-framed aluminium eg Sieger/Visiline
Brick - Yellow London Stock
Cladding - black metal eg Greencoat PLX
Roof tiles - Sandtoft Shire Interlocking Pantile, mottled red sand-faced



Rooflight



Red Pantiles



Yellow London stock brickwork



Garage door



'Sieger' slimline doors and windows



'Greencoat PLX' metal cladding



Black powder coated aluminium doors



Tree protection plan